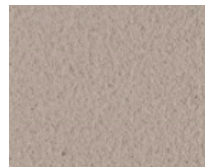


# RENDER COLOR CHART

## Available Stock Colors

											
<b>B10</b> 1005-B 0,30	<b>BL10**</b> 0500-N 0,22	<b>G00</b> 0502-Y50R 0,24	<b>G10</b> 0804-Y30R 0,25	<b>G16</b> 3502-R 0,68	<b>G20</b> 1005-Y20R 0,27	<b>G30</b> 1502-Y50R 0,43	<b>G40</b> 3005-Y20R 0,61	<b>G50</b> 2500-N 0,60	<b>G71</b> 2505-Y 0,66	<b>G76</b> 2005-R90B 0,57	<b>J10</b> 1020-Y30R 0,37
											
<b>J20</b> 0907-Y10R 0,30	<b>J30</b> 0515-Y20R 0,41	<b>J39</b> 0907-Y30R 0,30	<b>J40</b> 1010-Y20R 0,31	<b>J50</b> 1020-Y20R 0,33	<b>J60</b> 1030-Y20R 0,40	<b>J70</b> 1040-Y20R 0,41	<b>O10</b> 0507-Y40R 0,29	<b>O20</b> 0515-Y50R 0,33	<b>O30</b> 0505-Y50R 0,28	<b>O40</b> 1015-Y30R 0,41	<b>O50</b> 1010-Y60R 0,36
											
<b>O60</b> 1020-Y50R 0,38	<b>O70</b> 2020-Y30R 0,48	<b>O80</b> 2030-Y40R 0,50	<b>O90</b> 2040-Y60R 0,53	<b>R10</b> 1010-Y80R 0,29	<b>R20</b> 1015-Y40R 0,33	<b>R30</b> 1510-Y60R 0,44	<b>R40</b> 1515-Y50R 0,43	<b>R50</b> 1020-Y60R 0,47	<b>R60</b> 1015-Y70R 0,39	<b>R70</b> 2030-Y70R 0,48	<b>R80</b> 3030-Y70R 0,58
											
<b>R90</b> 3040-Y80R 0,67	<b>T10</b> 1505-Y60R 0,45	<b>T20</b> 0507-Y40R 0,30	<b>T30</b> 2010-Y20R 0,60	<b>T40</b> 0907-Y50R 0,33	<b>T50</b> 1010-Y30R 0,35	<b>T60</b> 2010-Y 0,54	<b>T70</b> 1015-Y30R 0,50	<b>T80</b> 1510-Y20R 0,44	<b>T90</b> 1510-Y40R 0,43	<b>V10</b> 1005-Y10R 0,41	<b>V20</b> 0804-G20Y 0,35

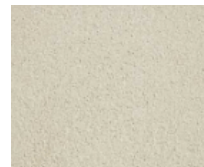
## Finish Options



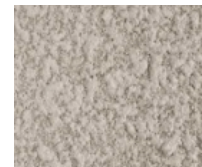
Fine Finish



Medium Finish



Trowelled



Rustic



Rustic 'crushed'



Balinese or Moroccan style

# RENDER COLOR CHART

Colors to be ordered

 <b>B23</b> 1015-R80B 0,34	 <b>B33</b> 2040-R90B 0,39	 <b>B42</b> 2020-R80B 0,41	 <b>B62</b> 4030-R80B 0,74*	 <b>B68</b> 4502-R 0,77*	 <b>B112</b> 4020-R40B 0,80*	 <b>G60</b> 5500-N 0,84*	 <b>G68</b> 4010-R30B 0,69	 <b>G78</b> 1510-R60B 0,45	 <b>G84</b> 6010-Y30R 0,77*	 <b>G95</b> 6502-B 0,88*	 <b>G101</b> 2010-R 0,43
 <b>G108</b> 4005-Y20R 0,76*	 <b>G117</b> 7005-R80B 0,90*	 <b>G132</b> 5010-R30B 0,75*	 <b>G162</b> 4005-Y80R 0,68	 <b>J29</b> 1020-Y20R 0,35	 <b>J33</b> 1015-Y20R 0,34	 <b>J53</b> 1030-Y30R 0,40	 <b>J91</b> 1040-Y10R 0,48	 <b>O74</b> 2040-Y20R 0,46	 <b>O84</b> 3030-Y20R 0,62	 <b>O88</b> 4030-Y40R 0,70	 <b>O138</b> 5020-Y20R 0,78*
 <b>O147</b> 3020-Y30R 0,66	 <b>O181</b> 2050-Y30R 0,50	 <b>O225</b> 3060-Y60R 0,54	 <b>R32</b> 2020-Y80R 0,54	 <b>R64</b> 3020-Y80R 0,53	 <b>R91</b> 3040-Y90R 0,56	 <b>R93</b> 4040-Y80R 0,68	 <b>R211</b> 4030-Y90R 0,79*	 <b>T28</b> 3010-R 0,62	 <b>T48</b> 1010-Y40R 0,35	 <b>T106</b> 1515-Y20R 0,54	 <b>T148</b> 5020-Y10R 0,82*
 <b>T153</b> 2010-Y40R 0,54	 <b>T164</b> 3020-Y60R 0,67	 <b>T167</b> 4020-Y90R 0,78*	 <b>T177</b> 3010-Y50R 0,65	 <b>T181</b> 5020-Y50R 0,80*	 <b>T184</b> 5010-Y70R 0,80*	 <b>T193</b> 1515-Y30R 0,53	 <b>V17</b> 3020-G30Y 0,50	 <b>V45</b> 2010-B90G 0,45	 <b>V59</b> 4010-G30Y 0,65	 <b>V84</b> 3020-G 0,51	 <b>V87</b> 2030-G90Y 0,44

The colors of this color chart are presented on a computer screen, devise or printed on paper and may be subject to certain variations. It is advised to look at a real sample.

\* Colors with a solar absorption coefficient exceeding 0.7  
These strong colors are more sensitive to the phenomena of nuance and efflorescence as well as to climatic constraints. Their use therefore requires an implementation adapted to humidity and temperature conditions.